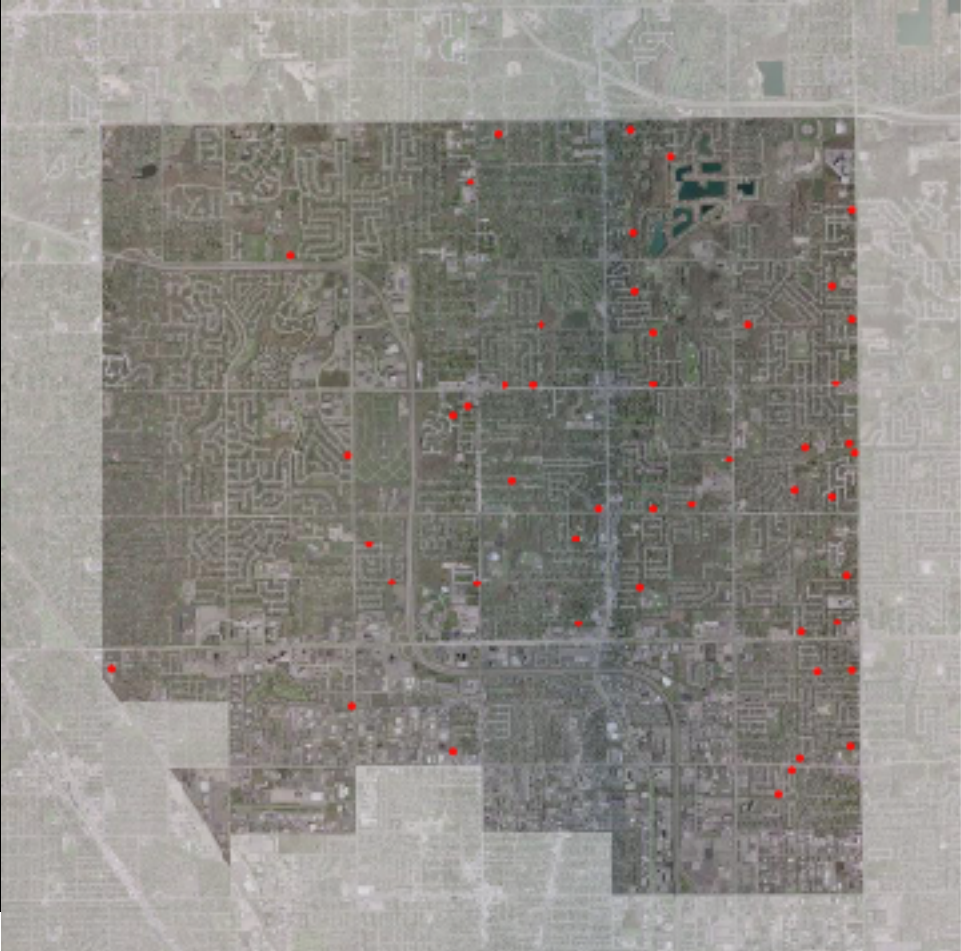


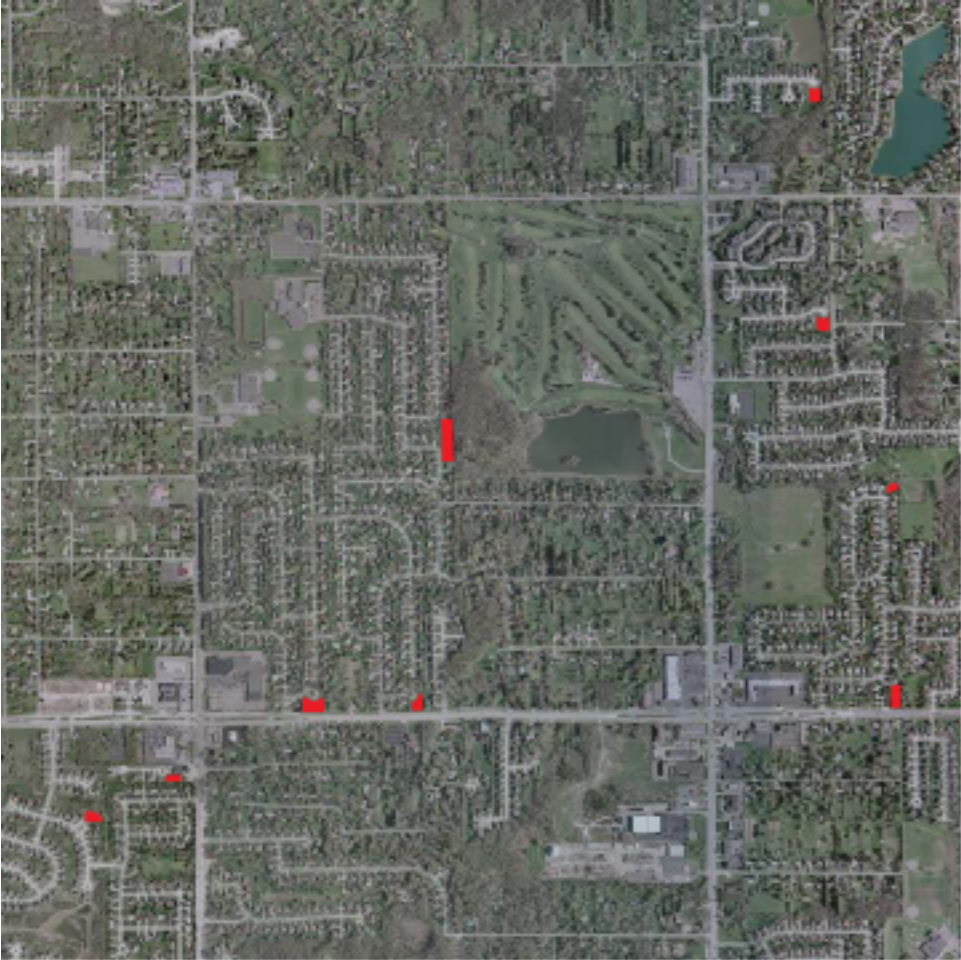
INHABITING SUBURBAN POCHE



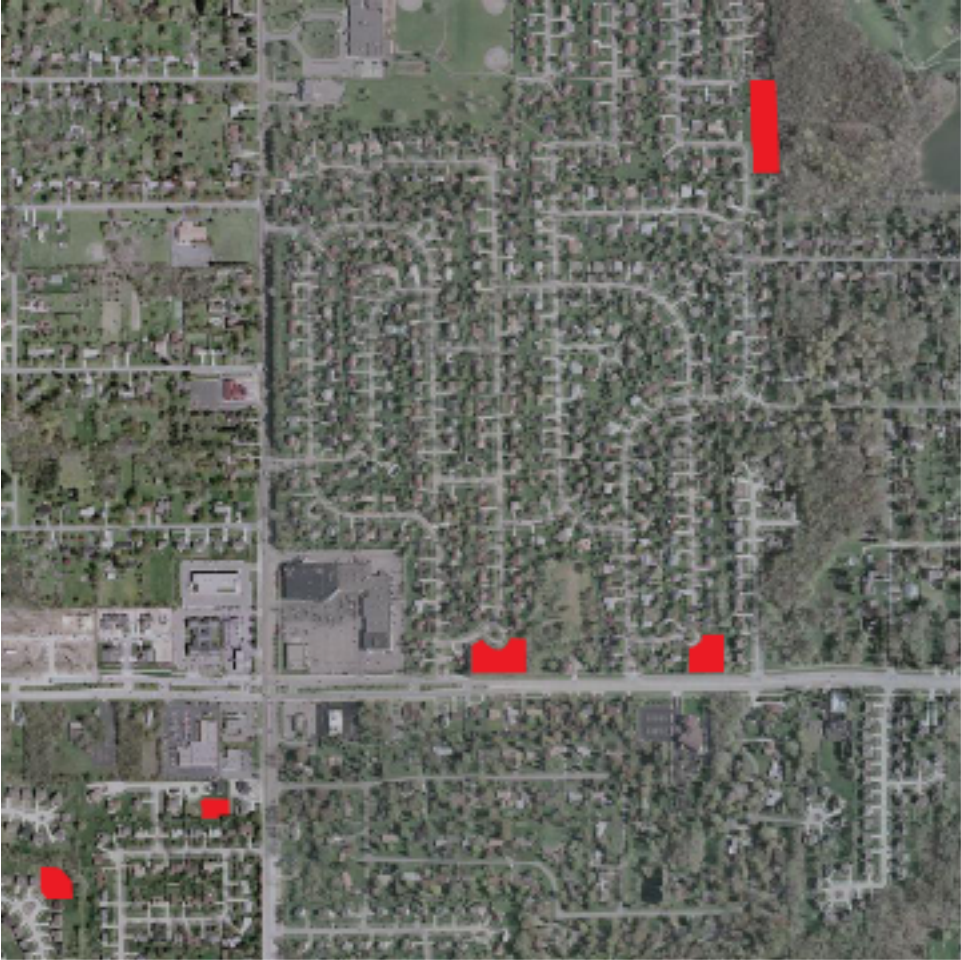
CITY

Troy, Michigan (suburb of Detroit)
Population: 80,959
Per Capita Income: \$35,936
Site: 0.46 acres
Project Square Footage: 1,685 SF (with deck)
Construction Cost: ~\$185,000
Gross Project Cost: ~\$200,000

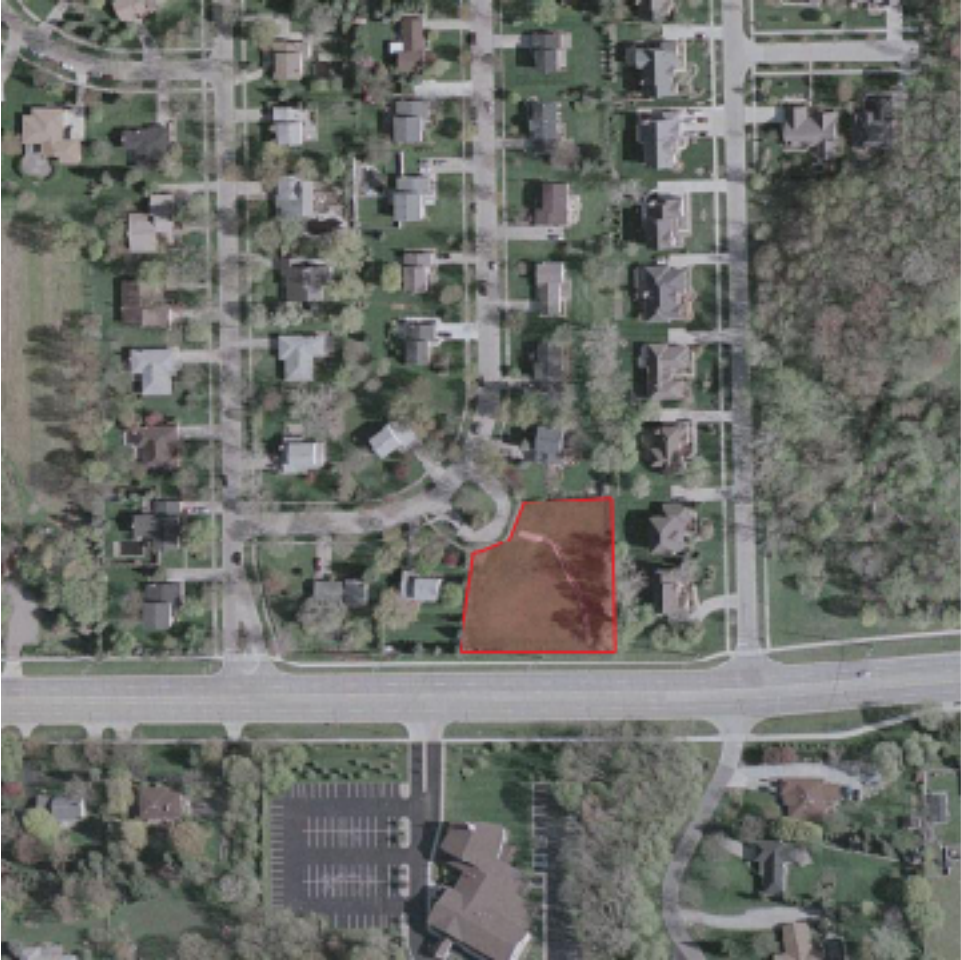
Troy, Michigan is a suburban city developed using the Jeffersonian one-mile street grid. As a subdivision is planned within these blocks, streets and parcels are carved out of a large plot of land; however, typically one parcel is set aside as a detention pond to deal with "developed run-off." These unusable, leftover "pockets" of space is what the project attempts to inhabit. The project addresses one typical detention pond, yet can be used as a strategy to approach the others as well. Since the land is considered unbuildable for traditional housing, the property can be acquired at little to no cost to develop because the building will increase the neighboring property values and provide more homeownership in the city. The design avoids interfering with the maintenance of the detention pond by lightly touching the site, but also celebrates the flow and collection of water by channelling rainwater to the center of the house and cascading over the glass walls as a visual affect. The choice of materials - concrete, glulam members, curtainwall, translucent polycarbonate and corrugated metal panels - minimize cost by being simultaneously the interior and exterior finishes of the house. This roughly \$200,000 home is designed based on a two-person household with a combined income of \$77,536 and moderate cost-of-living.



BLOCK



SUBDIVISION

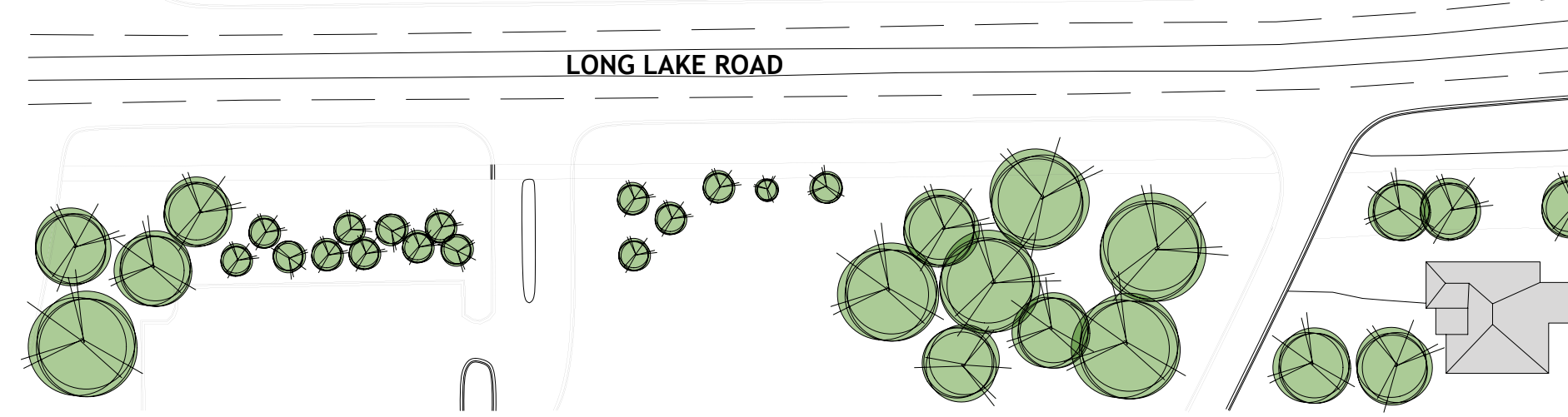
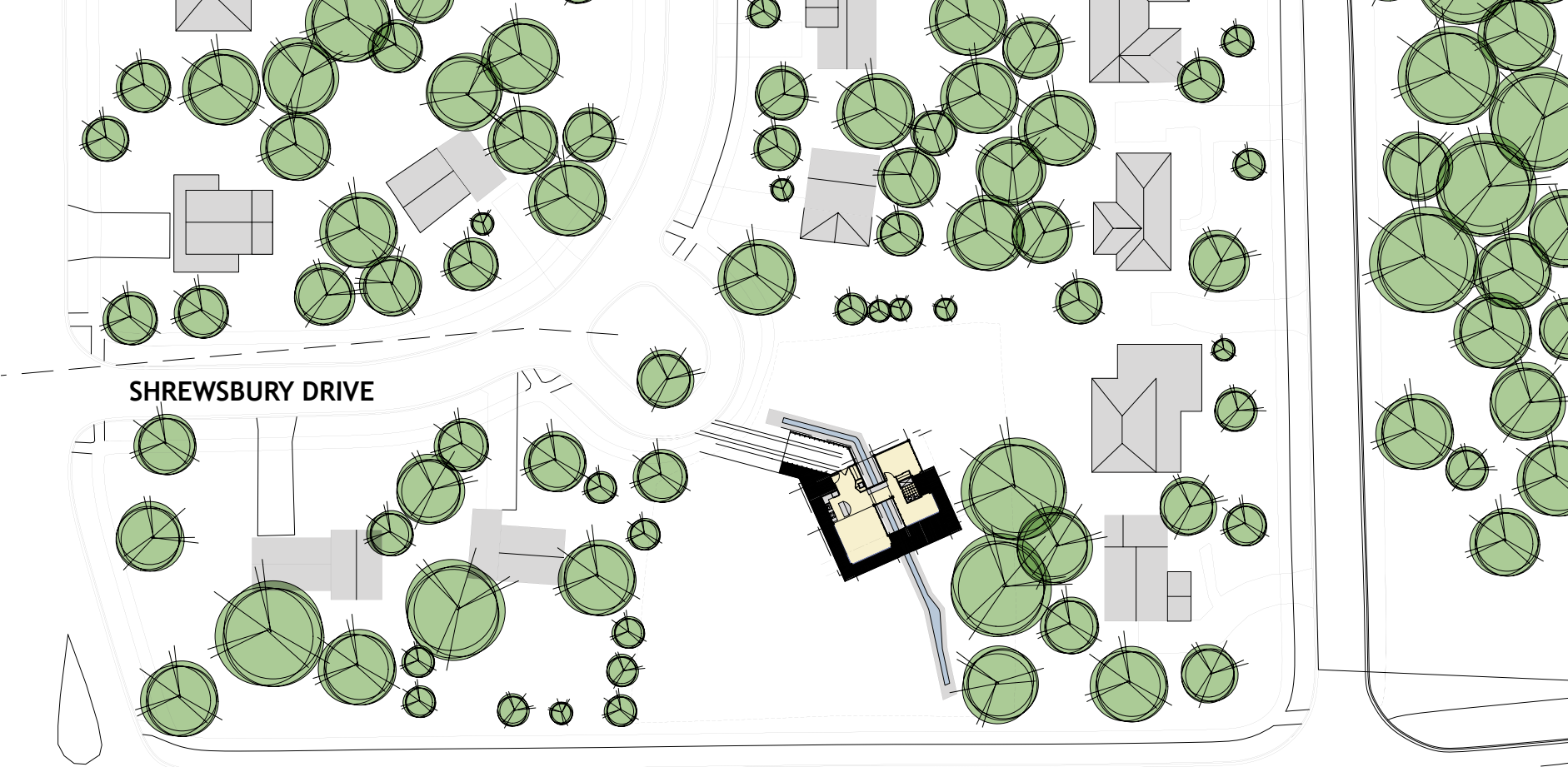


SITE

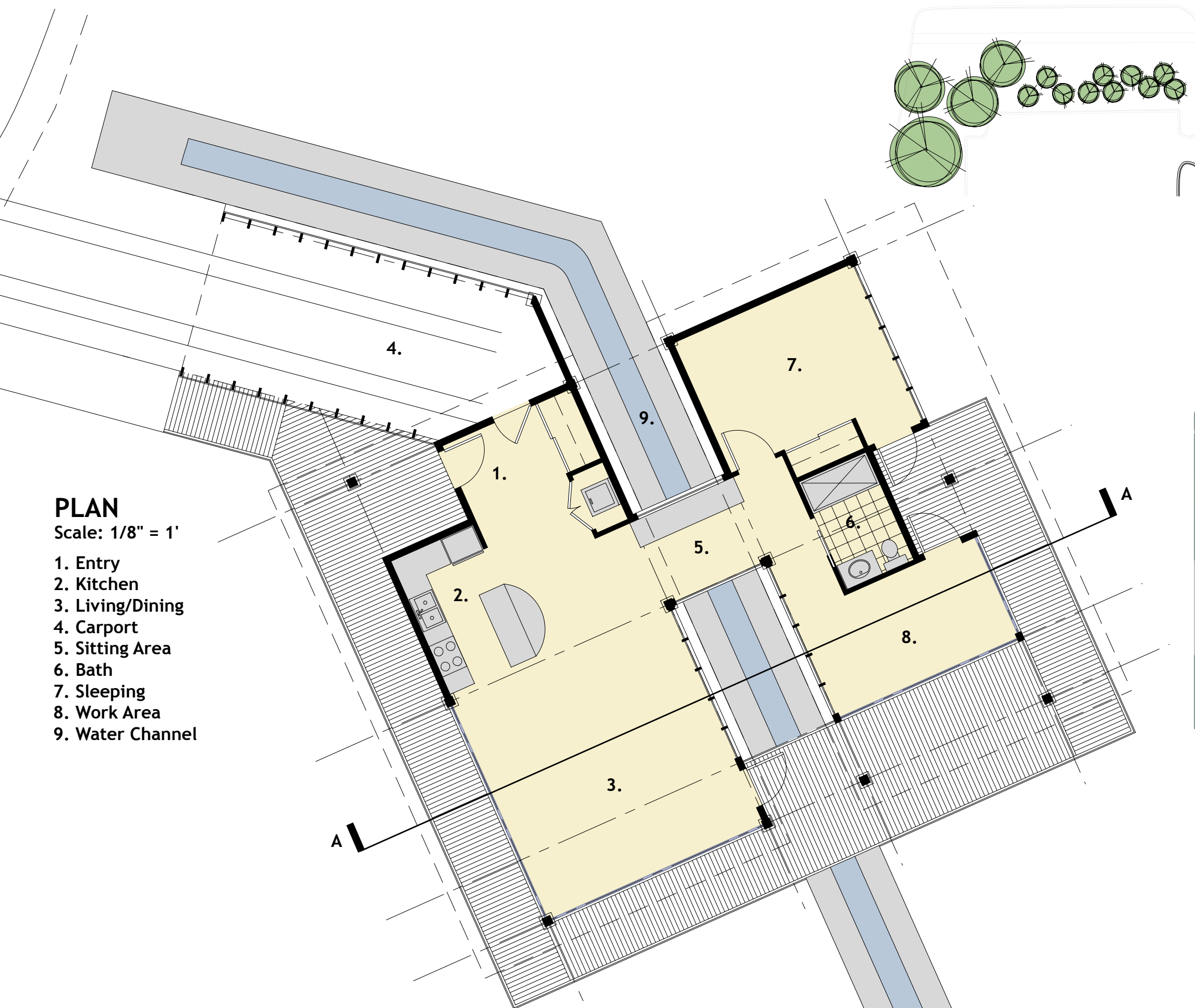




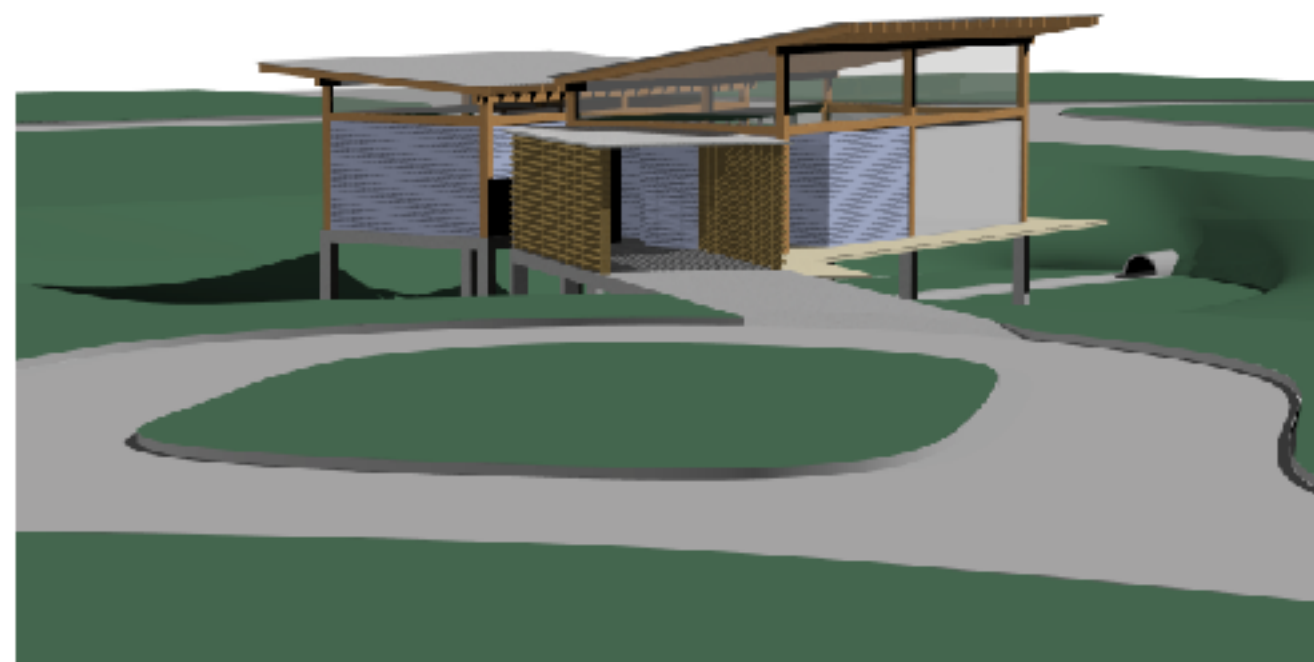
VIEW FROM LONG LAKE ROAD



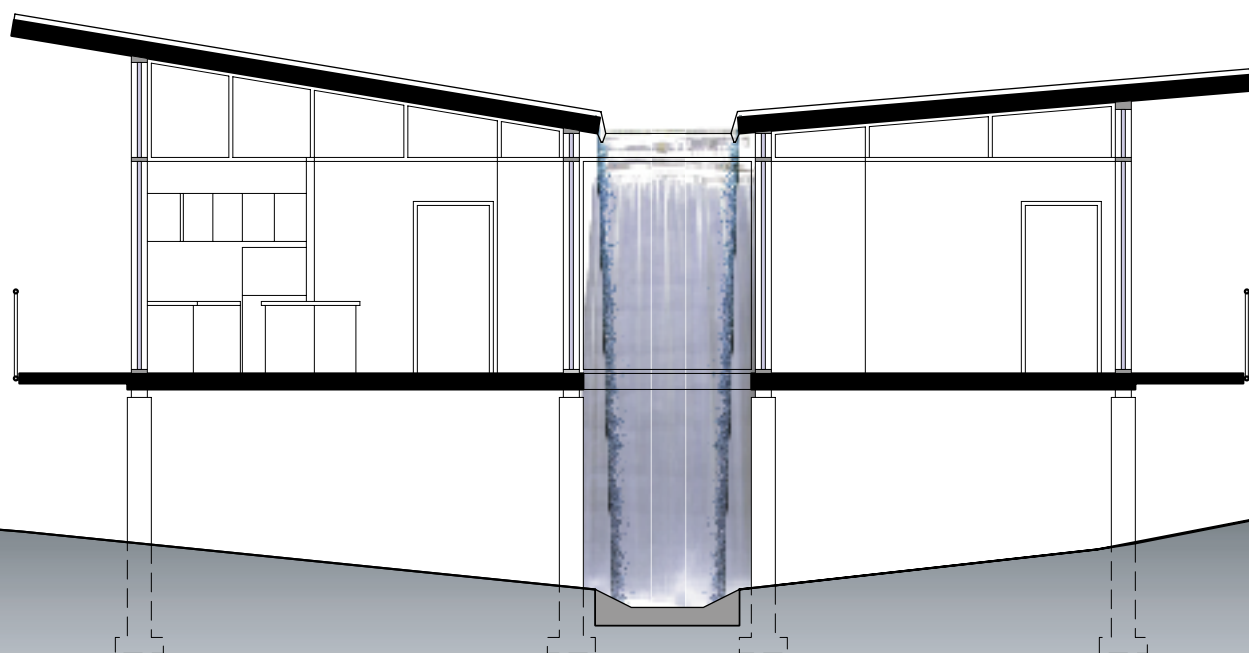
SITE PLAN



- PLAN**
Scale: 1/8" = 1'
- 1. Entry
 - 2. Kitchen
 - 3. Living/Dining
 - 4. Carport
 - 5. Sitting Area
 - 6. Bath
 - 7. Sleeping
 - 8. Work Area
 - 9. Water Channel

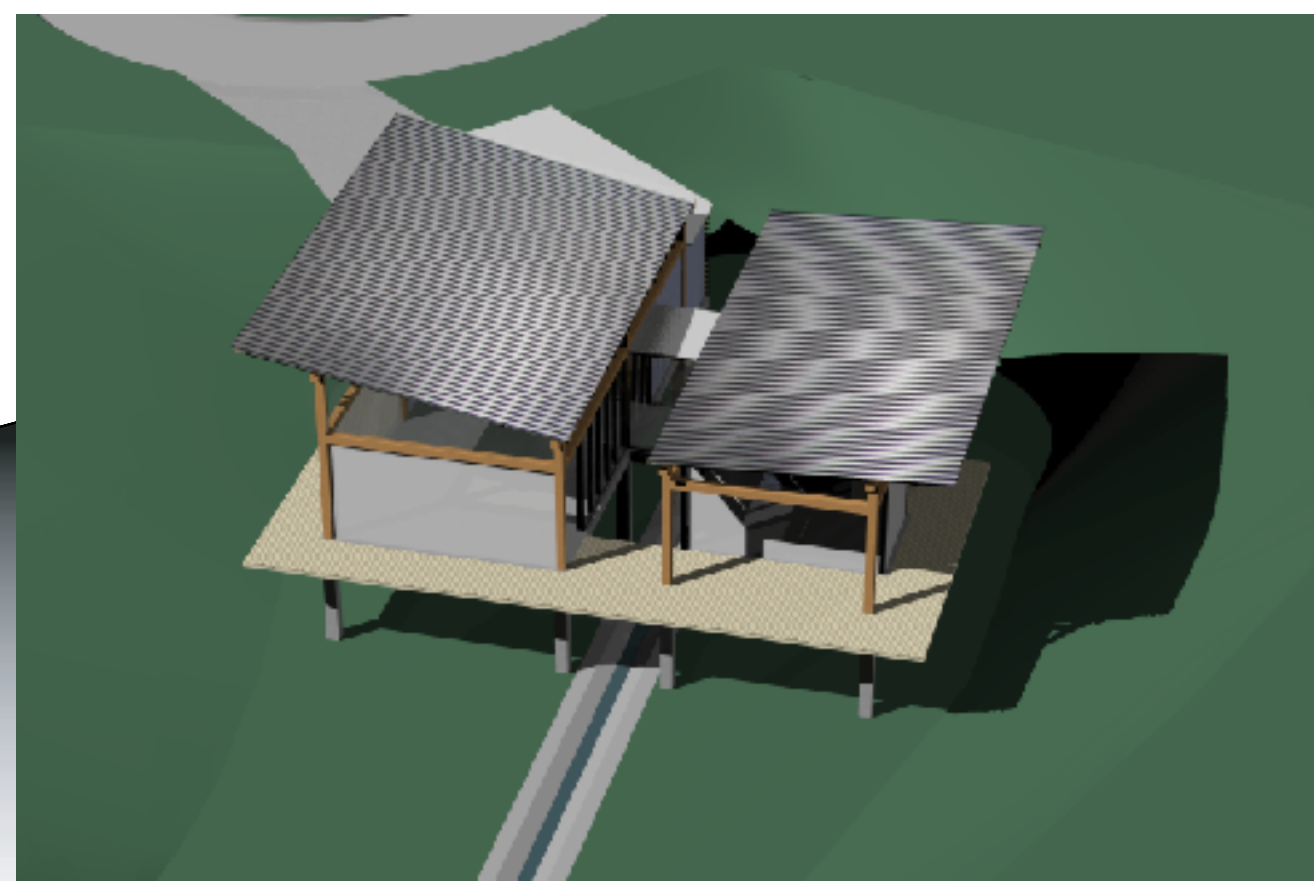


VIEW FROM SHREWSBURY DRIVE



SECTION A-A
Scale: 1/8" = 1'

AERIAL VIEW



POCHE
INHABITING SUBURBAN